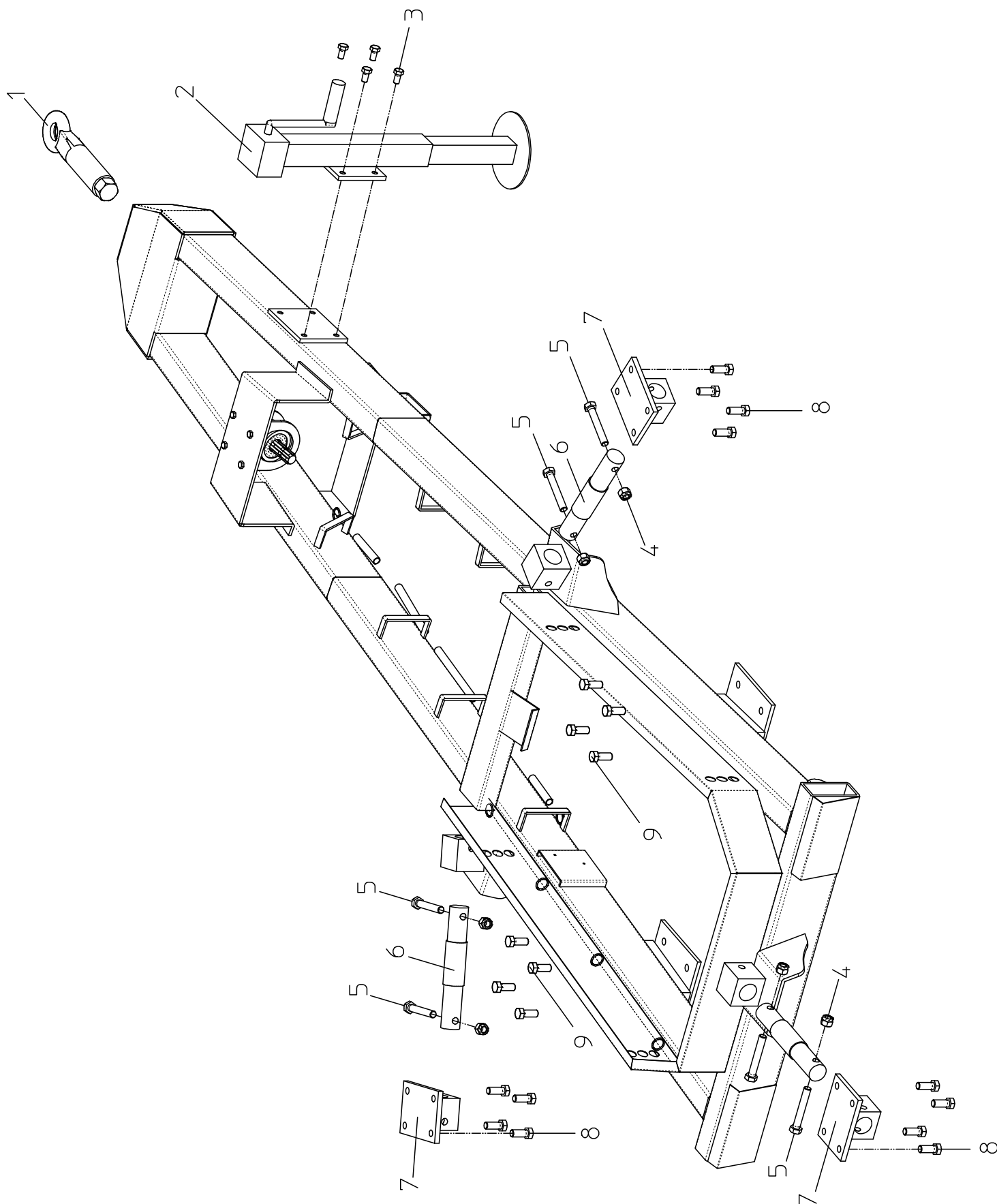


VASCA E TRASMISSIONE - WANNE UND TRANSMISSION - TANK AND TRANSMISSION - CUVE ET TRANSMISSION

1.	100030120	Coclea	Schnecken	Auger	Vis
2.	128016045	Vite	Schraube	Screw	Vis
3.	128008030	Vite	Schraube	Screw	Vis
4.	128020070	Vite	Schraube	Screw	Vis
4/A.	128020070	Dado	Mutter	Nut	écrous
5.	128010030	Vite	Schraube	Screw	Vis
5/A.	121000010	Dado	Mutter	Nut	écrous
6.	124016055	Vite	schraube	Screw	Vis
7.	110010122	Coltello	Messer	Knife	Couteau
8.	110010400	Sottocoltello	Untermesser	Under knife	Sous contea
9.	121000016	Dado	Mutter	Nut	écrous
10.	128016080	Vite	Schraube	Screw	Vis
11.	191M00075	Perno	Bolzen	Pivot	Pivot
12.	115001000	Controcoltello	Gegemesser	Counter knife	Contrecouteaux
13.	203700000	Riduttore	Unteretzungsgetriebe	Reduction gear	Riducteur
14.	121000016	Dado	Mutter	Nut	écrous
15.	321100060	Paratoia	Schieberplatte	Sluice gate's long flat bar	Plat de trappe
16.	191M00086	Perno	Bolzen	Pivot	Pivot
17.	150010009	Martinetto	Hydraulikzylinder	Hydraulic jack	Vérin hydraulique
18.	191M00085	Perno	Bolzen	Pivot	Pivot
19.	129920500	Serbatoio	Tank	Tank	Réservoir
20.	128008030	Vite	Schraube	Screw	Vis
21.	Tappo	Verchiuss	Filter cap	Bouchon de remblisage
22.	259000360	Livello olio	Oelstand	Oil level	Niveali huile
23.	128012030	Vite	Schraube	Screw	Vis
24.	191500015	Flangia	Flansch	Flange	Bride
25.	2824350353	Tubo	Schlauch	Tube	Tube
26.	280002020	Nipplo	Nippel	Nipple	Nipple
27.	280004030	Rondella	Beilagscheibe	Washer	Rondelle
28.	280004020	Rondella	Beilagscheibe	Washer	Rondelle
29.	280001010	Nipplo	Nippel	Nipple	Nipple
30.	280004030	Rondella	Beilagscheibe	Washer	Rondelle
31.	280002020	Nipplo	Nippel	Nipple	Nipple
32.	2824350353	Tubo	Schlauch	Tube	Tube
33.	128020100	Vite	Schraube	Screw	Vis
34.	128020045	Vite	Schraube	Screw	Vis



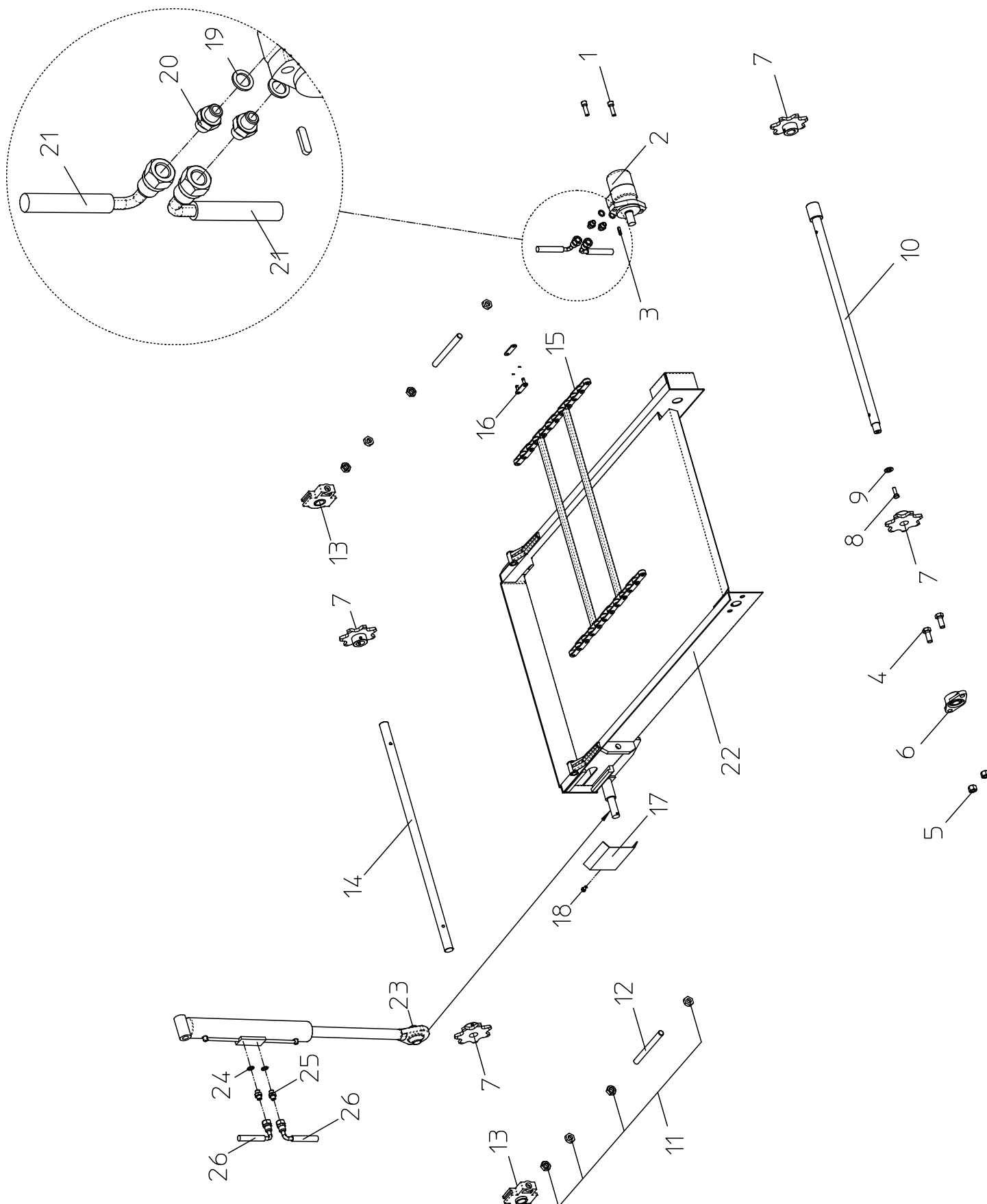
TELAIO - RAHMEN - CHASSIS

1.	310020032	Occhione girevole	Drehbare oese	Turning eylet	Oeil tournant
2.	150031640	Piedino manuale	Mechanische stutzfuss	Mechanic foot	Bequille mecanique
3.	128016030	Vite	Schraube	Screw	Vis
4.	121000018	Dado	Mutter	Nut	écrous
5.	128018140	Vite	Schraube	Screw	Vis
6.	360003402	Cella	Wiegezelle	Load cell	Jauge de contrainte
7.	145000558	Supporto cella	Wiegezellehalterung	Load cell	Jauge de contrainte
8.	128020040	Vite	Schraube	Screw	Vis
9.	128020045	Vite	Schraube	Screw	Vis

PROLUNGA - VERLÄNGERUNG

TAVOLA RLF 03/A

EXTENSION - RALLONGE



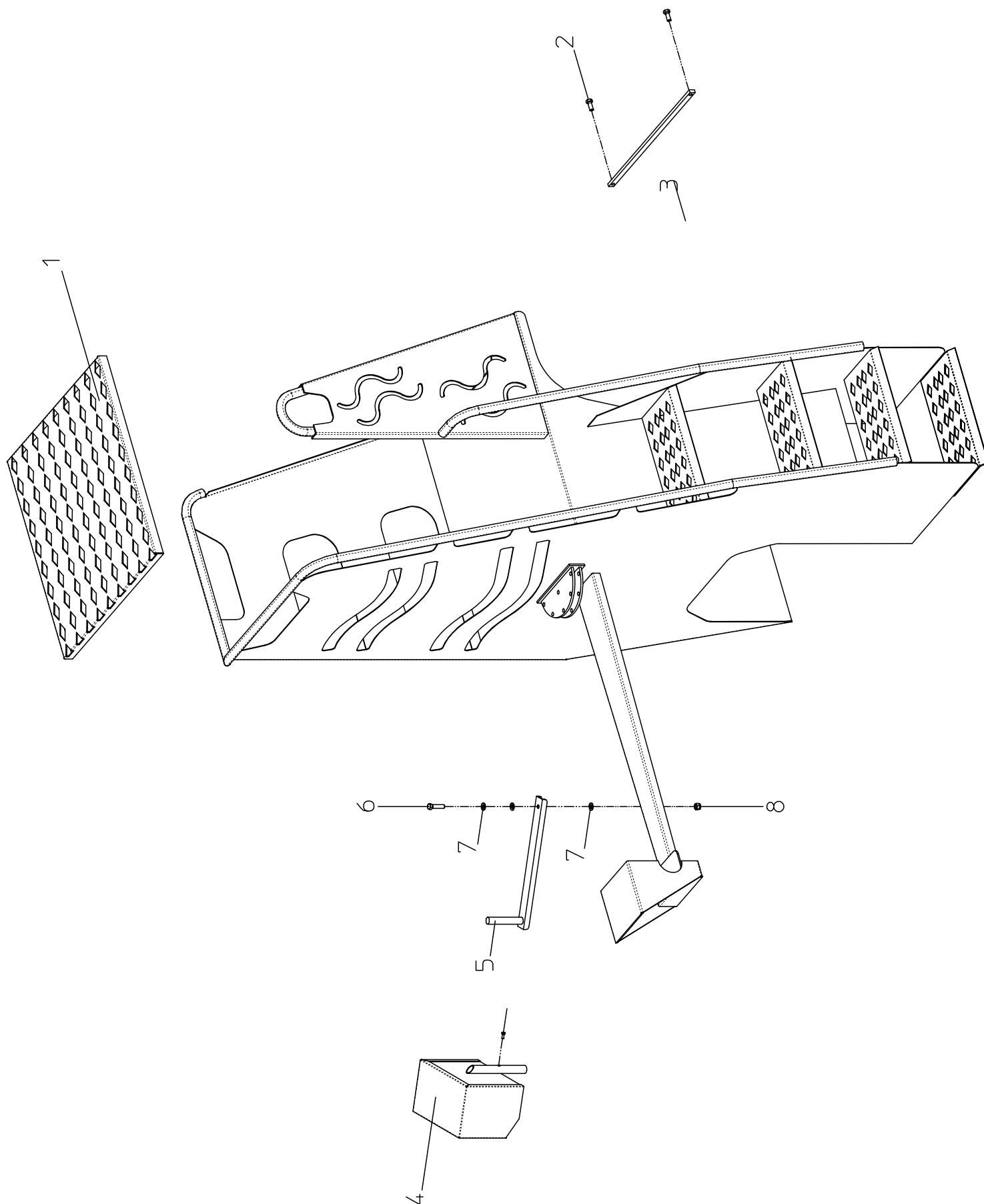
PROLUNGA - VERLÄNGERUNG - EXTENSION - RALLONGE

1.	125012035	Vite	Schraube	Screw	Vis
2.	230010020	Motore	Hydraulikmotor	Hydraulic motor	Moteur hydraulique
3.	Chiavetta	Keil	Key	Clavette
4.	128014030	Vite	Schraube	Screw	Vis
5.	121000014	Dado	Mutter	Nut	écrous
6.	142001010	Supporto UCFL 205	Traeger UCFL 205	Support UCFL 205	Support UCFL 205
7.	22300M010	Ingranaggio	Kettenzahnrad	Sprocket for noiseless chain	Pignon pour chain
8.	129200100	Rondella	Beilagscheibe	Washer	Rondelle
9.	128010030	Vite	Schraube	Screw	Vis
10.	191000092	Albero motore	Antriebswelle	Motor shaft	Arbre
11.	121100016	Dado	Mutter	Nut	écrous
12.	129000016	Barra filettata	Gewindestange	Threaded rod	Tige filetée
13.	142001100	Supporto UCT 206	Traeger UCT 206	Support UCT 206	Supporto UCT 206
14.	191000094	Albero tendi catena	Kettenspannerwelle	Chain stretcher shaft	Arbre tendeur de chaine
15.	212180130	Catena	Kettenschloss	Chain link	Chaîne
16.	213200087	Maglia di giunzione	Kette	Chain	Maille de jonction
17.	Coperchio	Deckel der Radnabe	Hub cap	Chapeau de roulement
18.	128006010	Vite	Schraube	Screw	Vis
19.	280004030	Rondella	Beilagscheibe	Washer	Rondelle
20.	280002020	Nipplo	Nippel	Nipple	Nipple
21.	2824520057	Tubo	Schlauch	Tube	Tube
22.	3200M1088	Carpenteria	Tragkonstruktionen	Carpentry	Charpentes
23.	150031622	Martinetto	Hydraulikzylinder	Hydraulic jack	Vérin hydraulique
24.	280004030	Rondella	Beilagscheibe	Washer	Rondelle
25.	280002020	Nipplo	Nippel	Nipple	Nipple
26.	2824480353	Tubo	Schlauch	Tube	Tube

PIATTAFORMA - PLATTFORM

TAVOLA RLF 04

PLATFORM - PLATEFORME



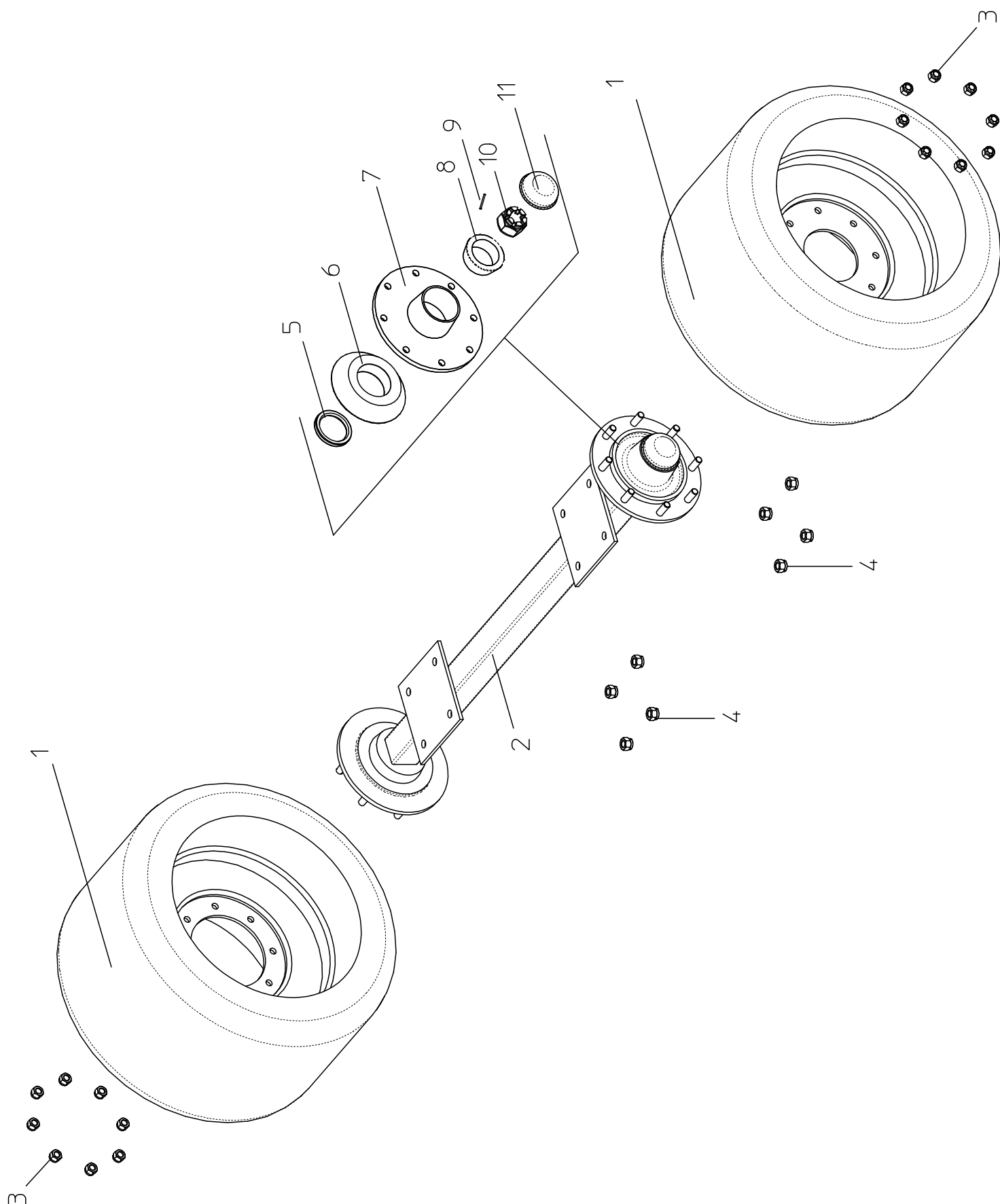
PIATTAFORMA - PLATTFORM - PLATFORM - PLATEFORME

1.	32MT03200	Pedana	Plattform	Platform	Plate-forme
2.	128008025	Vite	Schraube	Screw	Vis
3.	32MT00040	Piatto	Platte	Plate	Plat
4.	32MT03040	Supporto pesa	Wiegehalterung	Weighing system support	Support bascule
5.	32MT03050	Supporto pesa	Wiegehalterung	Weighing system support	Support bascule
6.	128012050	Vite	Schraube	Screw	Vis
7.	129200120	Rondella	Beilagscheibe	Washer	Rondelle
8.	121000012	Dado	Mutter	Nut	écrouse
9.	128006016	Vite	Schraube	Screw	Vis

ASSALE SENZA FRENI - ACHSE OHNE BREMSE

TAVOLA RLF 05

AXLE WITHOUT BRAKES - ESSIEU SANS FREIN

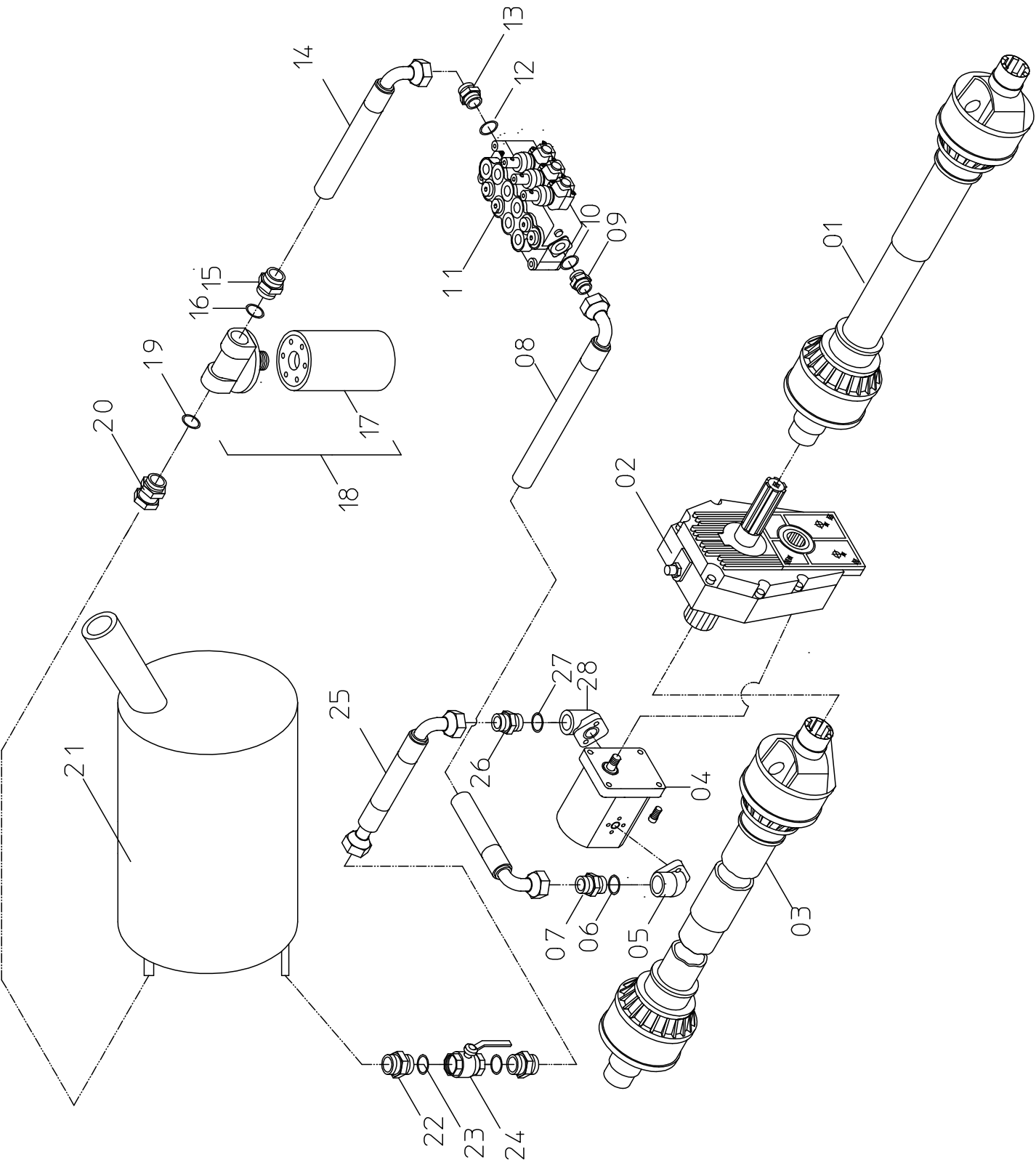


ASSALE SENZA FRENI - ACHSE OHNE BREMSE - AXLE WITHOUT BRAKES - ESSIEU SANS FREIN

1.	161M00670	Ruota	Reifen	Wheel	Roues
2.	160M160A8	Assale	Achse	Axle	Arbre
3.	121200017	Dado	Mutter	Nut	écrous
4.	121000020	Dado	Mutter	Nut	écrous
5.	Guarnizione	Dichtung	Gasket	Garniture
6.	Cuscinetto	Lager	Bearing	Roulement
7.	Mozzo	Radnabe	Hub	Moyeu
8.	Cuscinetto	Lager	Bearing	Roulement
9.	Dado	Mutter	Nut	écrous
10.	Coppiglia	Splint	Catter pin	Goujon d'assemblage
11.	Coperchio	Deckel der radnabe	Hub cap	Chapeau de roulement

ROLLERFEED IMP.IDRAULICO E TRASMISSIONE
ROLLERFEED HYDRAULISCHE ANLAGE UND TRANSMISSION
ROLLERFEED HYDRAULIC SYSTEM AND TRANSMISSION
ROLLERFEED SYSTEME HYDRAULIQUE ET TRANSMISSION

TAVOLA RLF 06



ROLLERFEED IMPIDRAULICO E TRASMISSIONE - ROLLERFEED HYDRAULISCHE ANLAGE UND TRANSMISSION

ROLLERFEED HYDRAULIC SYSTEM AND TRANSMISSION - ROLLERFEED SYSTEME HYDRAULIQUE ET TRANSMISSION

1.	310013130	Cardano	Kardan	PTO shaft	Gardan
2.	200010210	Cambio	Schaltgetriebe	Gear box	Boite de vitesse
3.	310013140	Cardano	Kardan	PTO shaft	Gardan
4.	250010004	Pompa PLP20 dx	Pumpe	Pump	Pompe
5.	251000034	Raccordo	Anschluss	Junction	Raccord
6.	280004030	Rondella	Beilagscheibe	Washer	Rondelle
7.	280002055	Nipplo	Nippel	Nipple	Nipple
8.	2825230403Z	Tubo	Schlauch	Tube	Tube
9.	2800021010	Nipplo	Nippel	Nipple	Nipple
10.	280004030	Rondella	Beilagscheibe	Washer	Rondelle
11.	240010030	Distributore	Verteiler	Distributor	Distributor
12.	280004020	Rondella	Beilagscheibe	Washer	Rondelle
13.	280001020	Nipplo	Nippel	Nipple	Nipple
14.	2825080403	Tubo	Schlauch	Tube	Tube
15.	280002050	Nipplo	Nippel	Nipple	Nipple
16.	280004040	Rondella	Beilagscheibe	Washer	Rondelle
17.	259000215	Cartuccia filtro	Filtereinsatz	Filter cartridge	Cartouche
18.	259000520	Filtro completo	Kompletter filter	Complete filter	Filter complet
19.	280004040	Rondella	Beilagscheibe	Washer	Rondelle
20.	280009077	Adattatore	Adapter	Adapter	Adaptateur
21.	129920112	Serbatoio	Oil behaelter	Oil tank	Réservoir
22.	280001030	Nipplo	Nippel	Nipple	Nipple
23.	280004040	Rondella	Beilagscheibe	Washer	Rondelle
24.	260010130	Valvola a sfera	Kugelventil	Stub pipe	Embout pour toyout
25.	2836080158	Tubo	Schlauch	Tube	Tube
26.	280002068	Nipplo	Nippel	Nipple	Nipple
27.	280004040	Rondella	Beilagscheibe	Washer	Rondelle
28.	251000034	Raccordo	Anschluss	Junction	Raccord

COMPANY:										DATE:		REVISION:	
COPPER INDUSTRIES Planetary Drives										DATE		REVISION	
RATIO										DATE		REVISION	
16,13/1										DATE		REVISION	
FIG. NO.										DATE		REVISION	
V37										DATE		REVISION	
DESCRIPTION										DATE		REVISION	
1600										DATE		REVISION	
PGA1602 VM										DATE		REVISION	
5717.000.8541										DATE		REVISION	
CODE										DATE		REVISION	
2 / 3										DATE		REVISION	
PAGE NO.										DATE		REVISION	
2 / 3										DATE		REVISION	
PAGE NO.										DATE		REVISION	
2 / 3										DATE		REVISION	
PAGE NO.										DATE		REVISION	
2 / 3										DATE		REVISION	
PAGE NO.										DATE		REVISION	
2 / 3										DATE		REVISION	
PAGE NO.										DATE		REVISION	
2 / 3										DATE		REVISION	
PAGE NO.										DATE		REVISION	
2 / 3										DATE		REVISION	
PAGE NO.										DATE		REVISION	
2 / 3										DATE		REVISION	
PAGE NO.										DATE		REVISION	
2 / 3										DATE		REVISION	
PAGE NO.										DATE		REVISION	
2 / 3										DATE		REVISION	
PAGE NO.										DATE		REVISION	
2 / 3										DATE		REVISION	
PAGE NO.										DATE		REVISION	
2 / 3										DATE		REVISION	
PAGE NO.										DATE		REVISION	
2 / 3										DATE		REVISION	
PAGE NO.										DATE		REVISION	
2 / 3										DATE		REVISION	
PAGE NO.										DATE		REVISION	
2 / 3										DATE		REVISION	
PAGE NO.										DATE		REVISION	
2 / 3										DATE		REVISION	
PAGE NO.										DATE		REVISION	
2 / 3										DATE		REVISION	
PAGE NO.										DATE		REVISION	
2 / 3										DATE		REVISION	
PAGE NO.										DATE		REVISION	
2 / 3										DATE		REVISION	
PAGE NO.										DATE		REVISION	
2 / 3										DATE		REVISION	
PAGE NO.										DATE		REVISION	
2 / 3										DATE		REVISION	
PAGE NO.										DATE		REVISION	
2 / 3										DATE		REVISION	
PAGE NO.										DATE		REVISION	
2 / 3										DATE		REVISION	
PAGE NO.										DATE		REVISION	
2 / 3										DATE		REVISION	
PAGE NO.										DATE		REVISION	
2 / 3										DATE		REVISION	
PAGE NO.										DATE		REVISION	
2 / 3										DATE		REVISION	
PAGE NO.										DATE		REVISION	
2 / 3										DATE		REVISION	
PAGE NO.										DATE		REVISION	
2 / 3										DATE		REVISION	
PAGE NO.										DATE		REVISION	
2 / 3										DATE		REVISION	
PAGE NO.										DATE		REVISION	
2 / 3										DATE		REVISION	
PAGE NO.										DATE		REVISION	
2 / 3										DATE		REVISION	
PAGE NO.										DATE		REVISION	
2 / 3										DATE		REVISION	
PAGE NO.										DATE		REVISION	
2 / 3										DATE		REVISION	
PAGE NO.										DATE		REVISION	
2 / 3										DATE		REVISION	
PAGE NO.										DATE		REVISION	
2 / 3										DATE		REVISION	
PAGE NO.										DATE		REVISION	
2 / 3										DATE		REVISION	
PAGE NO.										DATE		REVISION	
2 / 3										DATE		REVISION	
PAGE NO.										DATE		REVISION	
2 / 3										DATE		REVISION	
PAGE NO.										DATE		REVISION	
2 / 3										DATE		REVISION	
PAGE NO.										DATE		REVISION	
2 / 3										DATE		REVISION	
PAGE NO.										DATE		REVISION	
2 / 3										DATE		REVISION	
PAGE NO.										DATE		REVISION	
2 / 3										DATE		REVISION	
PAGE NO.										DATE		REVISION	
2 / 3										DATE		REVISION	
PAGE NO.										DATE		REVISION	
2 / 3										DATE		REVISION	
PAGE NO.										DATE		REVISION	
2 / 3										DATE		REVISION	
PAGE NO.										DATE		REVISION	
2 / 3										DATE		REVISION	
PAGE NO.										DATE		REVISION	
2 / 3										DATE		REVISION	
PAGE NO.										DATE		REVISION	
2 / 3										DATE		REVISION	
PAGE NO.										DATE		REVISION	
2 / 3										DATE		REVISION	
PAGE NO.										DATE		REVISION	
2 / 3										DATE		REVISION	
PAGE NO.										DATE		REVISION	
2 / 3										DATE		REVISION	
PAGE NO.										DATE		REVISION	
2 / 3										DATE		REVISION	
PAGE NO.										DATE		REVISION	
2 / 3										DATE		REVISION	
PAGE NO.										DATE		REVISION	
2 / 3										DATE		REVISION	
PAGE NO.										DATE		REVISION	
2 / 3										DATE		REVISION	
PAGE NO.										DATE		REVISION	
2 / 3										DATE		REVISION	
PAGE NO.										DATE		REVISION	
2 / 3										DATE		REVISION	
PAGE NO.										DATE		REVISION	
2 / 3										DATE		REVISION	
PAGE NO.										DATE		REVISION	
2 / 3										DATE		REVISION	
PAGE NO.										DATE		REVISION	
2 / 3										DATE		REVISION	
PAGE NO.										DATE		REVISION	
2 / 3										DATE		REVISION	
PAGE NO.										DATE		REVISION	
2 / 3										DATE		REVISION	
PAGE NO.										DATE		REVISION	
2 / 3										DATE		REVISION	
PAGE NO.										DATE		REVISION	
2 / 3										DATE		REVISION	
PAGE NO.										DATE		REVISION	
2 / 3										DATE		REVISION	
PAGE NO.										DATE		REVISION	
2 / 3										DATE		REVISION	
PAGE NO.										DATE		REVISION	
2 / 3										DATE		REVISION	
PAGE NO.										DATE		REVISION	
2 / 3										DATE		REVISION	
PAGE NO.										DATE		REVISION	
2 / 3										DATE		REVISION	
PAGE NO.										DATE		REVISION	
2 / 3										DATE		REVISION	
PAGE NO.										DATE		REVISION	
2 / 3										DATE		REVISION	
PAGE NO.										DATE		REVISION	
2 / 3										DATE		REVISION	
PAGE NO.										DATE		REVISION	
2 / 3										DATE		REVISION	
PAGE NO.													



CRONO S.r.l.

Via Corvione 20, Isorella (BS) Italia. Tel. 030/9952323 – 24, Fax 030/9952325
Email info@luclar.it Sito Web www.luclar.it